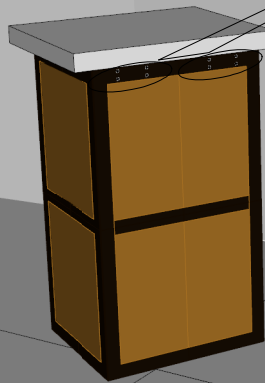
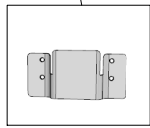


1. Look at the backside of the station. There are two sets of four holes. Use these holes as a template for where you want to mount the station. Make marks on your wall based on these holes. Screw the mounting brackets into the wall where the marks are. (The mounting brackets should be facing this way on the wall.)



Use these holes as the guide for where to place mounting brackets on wall.

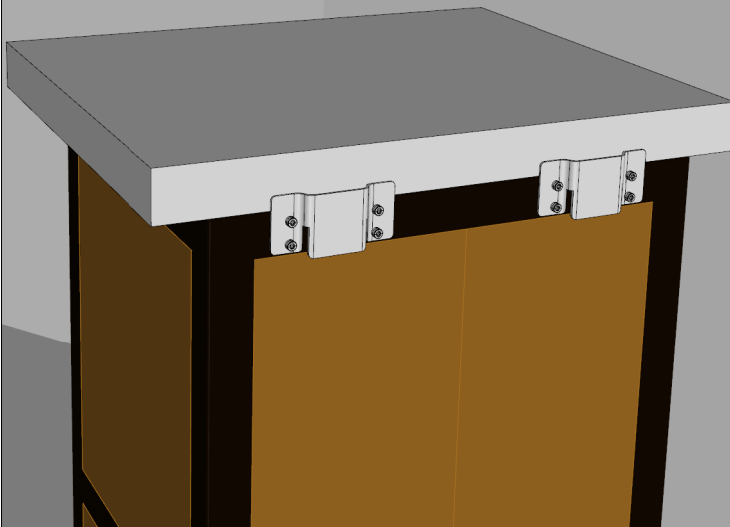
Ocone S-II Wall Mount Styling Station

Sku# MR-082

Instructions



2. Screw the other two mounting brackets into the back of the station as shown below.



3. Hang the station on the wall by sliding the brackets on the station down into the brackets on the wall.

